

What is Required?



1. Wireless Router (not included)



2. Device Compatibility

- iOS 7.0+
- Android 4.0+
- Mac OS X 10.9 Yosemite+
- Windows 7.0+ (PC Version Only)

What is included in the box?



Momentum
Wi-Fi Camera



Wall Adapter



USB Cable



Mounting Kit

MOMENTUM Quick Start Guide

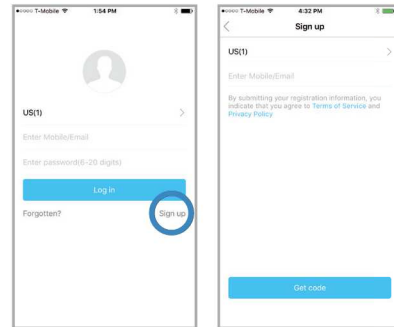
How to Install?

1. Download App



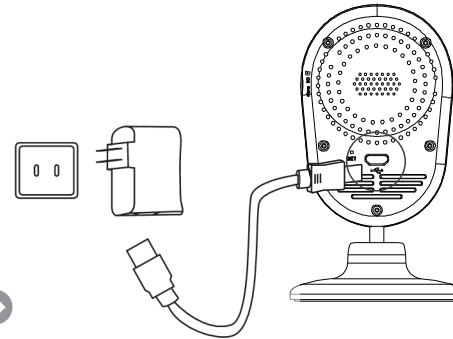
From your mobile device, download the **Momentum Camera** app from the Apple Store or the Google Play store. Launch the **Momentum Camera** app once installed.

2. Create an Account



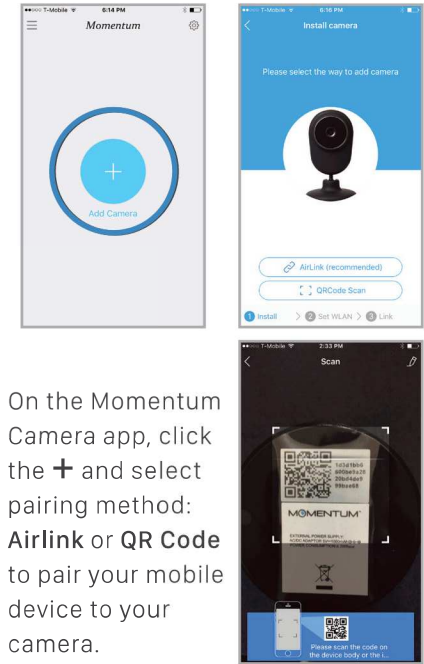
Click **Sign Up**. Enter your email address and click **Get code**. Activate your account by entering the verification code sent to your email address or phone number. Then log in.

3. Plug In Your Camera



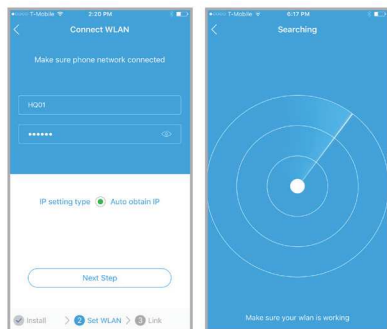
Connect the USB Cable to the back of the camera and to the wall adapter. Plug in the wall adapter to an outlet. When the single blue light is showing, reset the camera using the pin reset tool (See Reset section under Quick Tips). When the reset is complete, continue with step 4.

4. Add/Pair Device



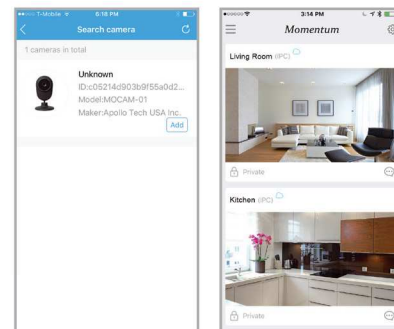
On the Momentum Camera app, click the **+** and select pairing method: **Airlink** or **QR Code** to pair your mobile device to your camera.

5. Connect to Wi-Fi Network



When your mobile device is paired with your camera, you will be prompted to enter your Wi-Fi information.

6. Complete Set Up



Name your camera and click **Confirm**. You have now successfully added your Momentum camera to your Wi-Fi network. To add more cameras, repeat steps 4 -6.

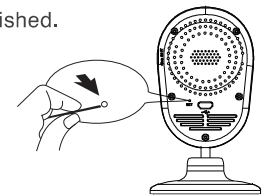
Quick Tips:

Light Indicators & Status

1. Solid Red Light - Booting
2. Flashing Red light - Ready to connect to Wi-Fi - open AirLink auto search.
3. Flashing Blue Light - Camera can now be detected by your device and is ready to connect.
4. Solid Blue Light - Connected. Select the camera to assign a name.

Reset

1. Use the provided reset tool or a paper clip pin.
2. With the Momentum camera plugged in and displaying a blue light, insert the reset tool for 3 seconds(see the diagram).
3. You will hear a beep sound. The camera reset sequence takes approximately 25-30 seconds. Reset is complete when red light flashing has finished.



Need more info?

Please visit us at www.momentumcam.com for more information or contact our customer service center: 1-888-818-0436

